

**RULES:** USPSA Handgun Competition Rules, current edition      **COURSE DESIGNER:** John Amidon

**START POSITION:** Standing in Box A facing targets with both wrists above respective shoulders. Handgun is loaded and holstered as per ready condition in rule 8.1.1 and 8.1.2.

## STAGE PROCEDURE

- String 1. Upon start signal, from Box A, engage only T3 with six rounds, perform a mandatory reload and engage only T2 with six rounds, strong hand only.
- String 2. Upon start signal, from Box A, engage only T3 with six rounds, perform a mandatory reload and engage only T1 with six rounds, weak hand only.

Jams may be cleared with both hands.

## SCORING

**SCORING:** Virginia Count, 24 rounds, 120 points

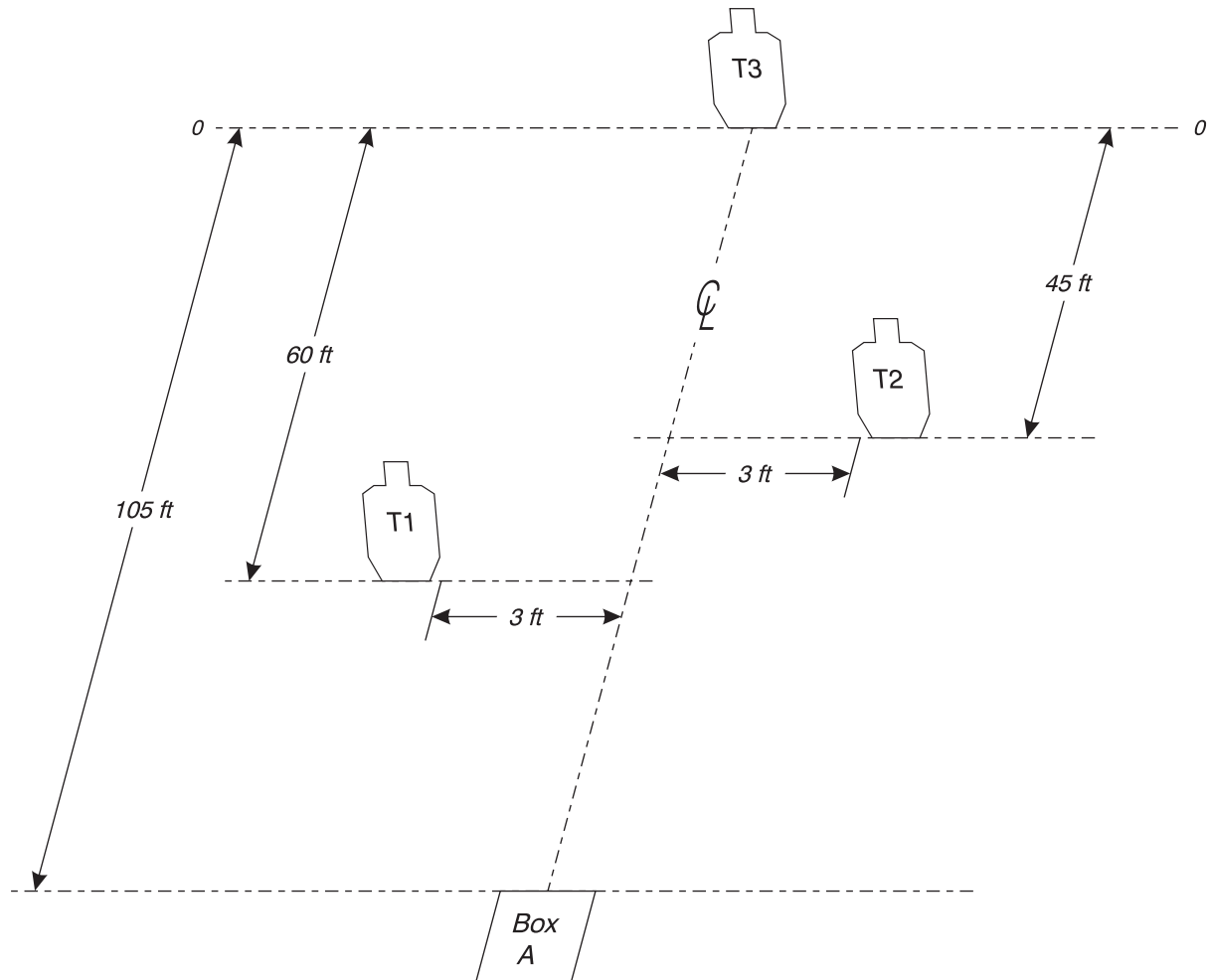
**TARGETS:** 3 Metric

**SCORED HITS:** Best 6 on T1-T2, best 12 on T3

**START-STOP:** Audible - Last shot

**PENALTIES:** Per current edition of USPSA Handgun Competition Rules

Failure to perform mandatory reload will result in one procedural penalty per shot fired.



**SETUP NOTES:** Set paper targets to 5 feet high at shoulders. Box A is 3 feet by 3 feet.



## CM 99-63 Merle's Standards

### Written Stage Briefing

Merle's Standards is a 24 round, 120 point Virginia Count classifier course. There are 3 metric targets. The best 6 hits on T1 and T2 will score. The best 12 hits on T3 will score. The start signal is audible.

Start position is standing in Box A, facing the targets with both wrists above your respective shoulders. Your gun is loaded and holstered.

PCC start position is standing in Box A, facing downrange, stock on belt, muzzle downrange, loaded carbine held in both hands with safety on.

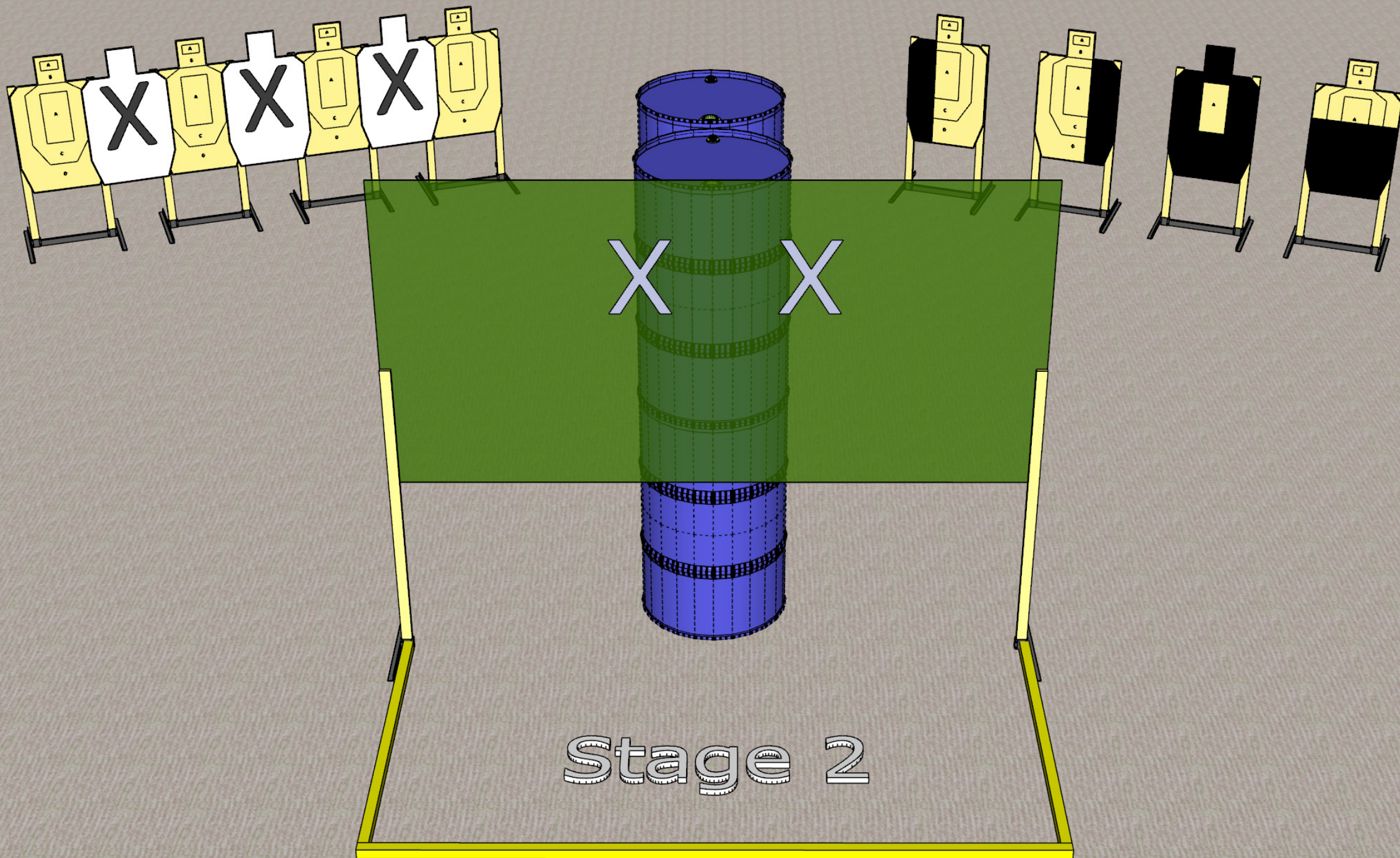
String 1: On the start signal, from Box A, engage only T3 with 6 rounds, freestyle, make a mandatory reload and engage only T2 with 6 rounds, strong hand only. PCC—strong shoulder only.

String 2: On the audible start signal, from Box A, engage only T3 with 6 rounds, freestyle, make a mandatory reload, and engage only T1 with six rounds, weak hand only. PCC—weak shoulder only.



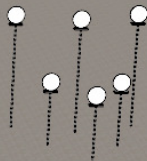
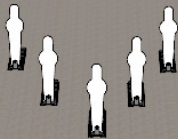
<b>Stage No. 2</b>		<b>Lay Down, Sally</b>	
<b>Start Position Handgun:</b>		Standing on carpet, both hands touching X marks on wall. Handgun loaded and holstered.	
<b>Start Position PCC:</b>		Standing on carpet, PCC muzzle touching one X mark. PCC loaded and on safe.	
<b>Scoring:</b>			
<input type="checkbox"/> Comstock <input checked="" type="checkbox"/> Virginia Count <input type="checkbox"/> Fixed Time	<b>Strings:</b>	1	
	<b>Rounds:</b>	16	
	<b>Paper Targets:</b>	8	
	<b>Steel Targets:</b>	0	
	<b>Scored Hits:</b>	Best 2 hits/paper	
<b>Stage Procedure:</b>			
<p>Upon start signal, engage targets from under the wall and in between wall posts. All shots must pass between posts and below bottom edge of wall.</p> <p>Engage target array with no-shoots with two shots each, then make a mandatory reload and engage target array with hard cover with two shots each. Arrays may be engaged in any order.</p> <p>Shooters physically unable to comply with WSB may take a 20% penalty of their points SCORED, by shooting around the ends of the wall instead of underneath it. Any shooter who wishes to do this must request this before shooting and be approved by the RO. Physically able shooters will be assessed one procedure per shot fired while not complying with the WSB.</p>			



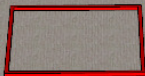




<b>Stage No. 3</b>		<b>Why Don't We Steel Away</b>	
<b>Start Position Handgun:</b>		Standing in any box, hands relaxed at side. Handgun loaded and holstered.	
<b>Start Position PCC:</b>		Standing in any box, PCC stock on belt, muzzle generally down range, weak hand holding hand guard, strong hand relaxed at side. PCC loaded and on safe.	
<b>Scoring:</b>			
<input checked="" type="checkbox"/> <b>Comstock</b> <input type="checkbox"/> <b>Virginia Count</b> <input type="checkbox"/> <b>Fixed Time</b>	<b>Strings:</b>	1	
	<b>Rounds:</b>	15	
	<b>Paper Targets:</b>	0	
	<b>Steel Targets:</b>	15	
	<b>Scored Hits:</b>	Steel must fall to score	
<b>Stage Procedure:</b>			
<p>Upon start signal, engage steel targets directly in front of each box only from that box.</p> <p>Full size poppers must be engaged only from left box.          Mini poppers must be engaged only from center box.          Hex plates must be engaged only from right box.</p> <p>One procedure per shot fired at steel outside of correct box.</p> <p>Shooter may start in any box and shoot from boxes in any order.</p>			

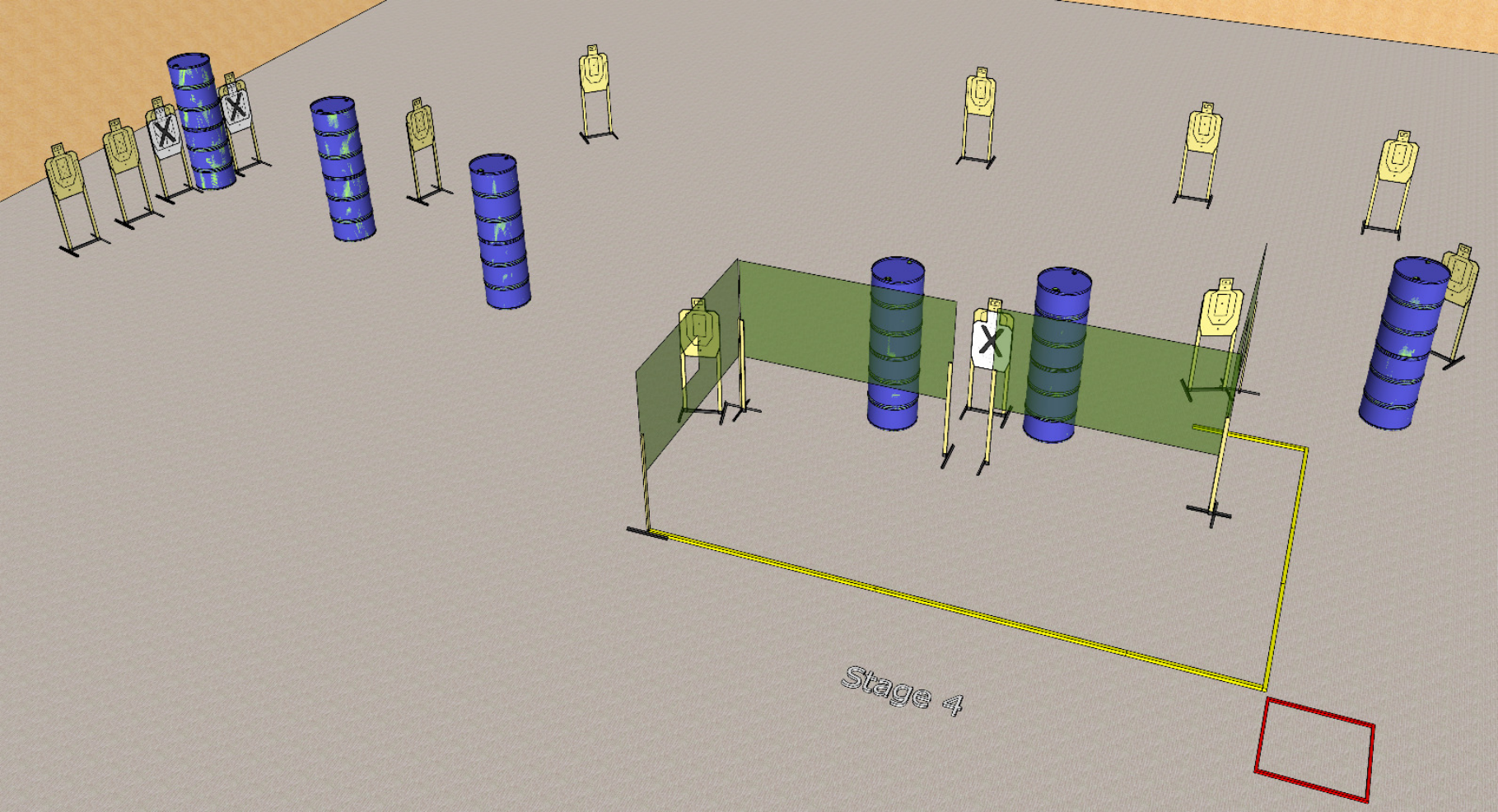


Stage 3



<b>Stage No. 4</b>		<b>I've Seen That Face Before</b>	
<b>Start Position Handgun:</b>		Standing in PVC box facing generally down range, hands relaxed at side. Handgun is loaded and holstered.	
<b>Start Position PCC:</b>		Standing in PVC box facing generally down range, PCC stock on belt, weak hand on hand guard, strong hand relaxed at side. PCC is loaded on safe.	
<b>Scoring:</b>			
<input checked="" type="checkbox"/> <b>Comstock</b> <input type="checkbox"/> <b>Virginia Count</b> <input type="checkbox"/> <b>Fixed Time</b>	<b>Strings:</b>	1	
	<b>Rounds:</b>	26	
	<b>Paper Targets:</b>	13	
	<b>Steel Targets:</b>	0	
	<b>Scored Hits:</b>	Best 2 hits/paper	
<b>Stage Procedure:</b>			
<p>Upon start signal, engage targets as they become visible from within fault lines.</p>			





Stage 4



<b>Stage No. 5</b>		<b>American Pie</b>	
<b>Start Position Handgun:</b>		Standing in the PVC box, with hands relaxed at side. Handgun is loaded and holstered.	
<b>Start Position PCC:</b>		Standing in PVC box facing generally down range, PCC stock on belt, weak hand on hand guard, strong hand relaxed at side. PCC is loaded on safe.	
<b>Scoring:</b>			
<input checked="" type="checkbox"/> <b>Comstock</b> <input type="checkbox"/> <b>Virginia Count</b> <input type="checkbox"/> <b>Fixed Time</b>	<b>Strings:</b>	1	
	<b>Rounds:</b>	32	
	<b>Paper Targets:</b>	16	
	<b>Steel Targets:</b>	0	
	<b>Scored Hits:</b>	Best 2 hits/paper	
<b>Stage Procedure:</b>			
<p>Upon start signal, engage targets as they become visible from within fault lines.</p>			



